

# Micro-D High-Density Connectors >

Next-generation Micro-D High-Density Connectors provide four times the density of standard D-sub connectors. Optimized to save PCB and packaging space, the Micro-D High-Density Connector's rugged housing, reliable field performance and automatic polarization feature make it an ideal solution for data/communications, industrial automation and commercial applications. Configurations include right-angle (single row and dual stacked) and vertical options. Cable assemblies are available single- or double-ended.

## ADVANTAGES AND FEATURES

### Improves flexibility and reduces system downtime

The hot-pluggable design and compliance with Secure Systems and Applications (SSA) standards support use in a wide variety of applications.

### Enhances mechanical and electrical reliability

The rugged design helps deliver long-term reliability while the metal interface with grounding tabs supports electrical performance.

Circuits	9 to 50
Operating Voltage	30V RMS
Current (max.)	1.0A
Durability (min.)	500 mating cycles
Operating Temperatures	-40 to +125°C (PCB Headers) -40 to +80°C (Cable Assemblies)



## MARKETS AND APPLICATIONS

### Server and Storage

Servers  
Core routers  
Storage devices

### Medical

Patient monitors

### Telecommunications

Network switching systems  
Handheld scanners

### Commercial

Fingerprint scanners  
Voice recognition systems

### Industrial Automation

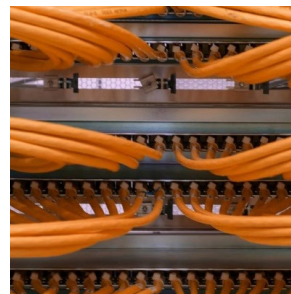
Machine vision systems  
Motion and process controls  
Pick-and-place robots

### Commercial Vehicle

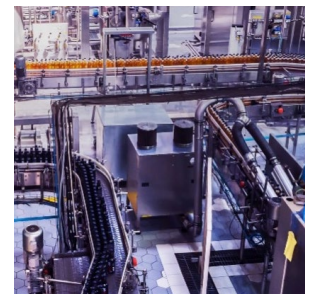
Telematics



*Servers*



*Network Switching Systems*



*Motion and Process Controls*

# Micro-D High-Density Connectors >

## ORDERING INFORMATION

### Plugs

Circuits	Series	Mounting Style	Orientation	Jackposts
9	83611	Board mount	Right angle, vertical	Right angle: Optional Vertical: Yes
15	83612			
25	83614			

### Dual Stacked Plugs

Circuits	Series	Mounting Style	Orientation	Jackposts
18, 30, 50	83619	Board mount	Right angle	Yes

### Cable Assemblies

Circuits	Series	Description	Type	Length*
9	83421	Micro-D single-end, Micro-D-to-Micro-D,	Female, female-to-female	0.91m
15	83422	Micro-D single-end, Micro-D-to-Micro-D	Female, female-to-female	
25	83619	Micro-D single-end	Female	
25	83424	Micro-D-to-Micro-D	Female-to-female	

### Cable Receptacle Kits

Circuits	Series†
9	83421
15	83422
25	83424

### Terminals

Packaging	Series	Type
Loose or 50,000-piece reel	83000	Female

### Jackposts

Series
83041

\*Additional cable lengths available

†Requires female terminals

[www.molex.com](http://www.molex.com)